

Trouble shooting Q & A

Q: Why wouldn't the water flow when I turned on my shower?

A: In the event you turn on your shower and water only trickles, it is likely already hot and waiting for you to take a shower. To resume the water's normal flow simply flip **evolve's** toggle switch (*Using your showerhead Step #3*).

A little more detail...

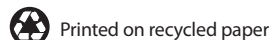
evolve's integrated ShowerStart™ technology prevents expensive hot water from unnecessarily running down the drain before you actually get in the shower. It does this by automatically entering trickle mode once the water reaches bathing temperature, approximately 95°F (35° C). If the water flowing to the showerhead has reached this temperature, your **evolve** showerhead will be in trickle mode the moment you turn it on. This typically happens when users are taking showers within a few minutes of one another. It could also happen if your bathroom became exceptionally hot - above 95° F (35° C). In either event, flipping the toggle switch will resume your showerhead's normal flow if it is in trickle mode when the water is turned on.

3 Year Limited Lifetime Warranty

For warranty claims please contact us at www.evolve showerheads.com or call 480-496-2294

ShowerStart LLC warrants this product to be free from defects in materials and workmanship for a period of three years from the date of purchase. This warranty is limited to repairing or replacing, at ShowerStart's sole option, any such defective products. To obtain service under warranty you must obtain a Return Material Authorization (RMA) number from a ShowerStart representative. The product must be returned with transportation charges prepaid and must be accompanied by a brief description of the problem encountered and proof of date and place of purchase. This warranty does not apply to equipment which has been damaged by accident, negligence, or misapplication or has been altered or modified in any way. This warranty applies to the original purchaser. EXCEPT AS PROVIDED HEREIN, SHOWERSTART MAKES NO WARRANTIES, EXPRESSED OR IMPLIED, INCLUDING WARRANTIES OF MERCHANTABILITY AND FITNESS FOR A PARTICULAR PURPOSE. Some countries do not permit limitation or exclusion of implied warranties; therefore, the aforesaid limitation(s) or exclusion(s) may not apply to the purchaser. EXCEPT AS PROVIDED ABOVE, IN NO EVENT SHALL SHOWERSTART BE LIABLE FOR DIRECT, INDIRECT, SPECIAL, INCIDENTAL, OR CONSEQUENTIAL DAMAGES ARISING OUT OF THE USE OF THIS PRODUCT, EVEN IF ADVISED OF THE POSSIBILITY OF SUCH DAMAGE. Specifically, ShowerStart is not liable for any costs, such as lost products or revenue, loss of equipment, loss of use of equipment, costs of substitutes, claims by third parties, or otherwise. This warranty gives you specific legal rights and you may also have other rights which may vary from location to location.

Conforms to A112.18.1M 2.5 GPM



Printed on recycled paper

© 2008, Showerstart, LLC. All rights reserved. Patents Pending. Made in China. Rev. 013108

evolve™

the guide

be resourceful

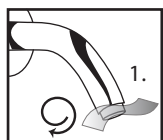
discover the beauty of doing your part without doing without

Package Contents:

evolve showerhead
59" hose
shower arm mounting bracket
PTFE plumbers tape
pull cord
installation instructions & user's guide

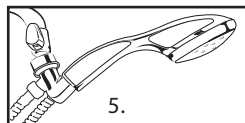
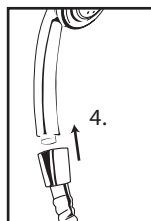
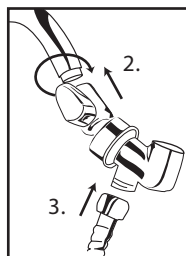


Outside



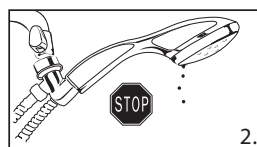
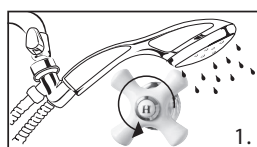
Installation:

1. Wrap included PTFE plumbers tape around screw threads of shower arm.
2. Attach hand shower mount to shower arm – rotate in clockwise direction.
3. Insert one of the rubber washers (included) into the six sided nut on end of shower hose and attach shower hose to hand shower mount—rotate nut in clockwise direction.
4. Insert remaining rubber washer into round nut on shower hose and attach hand shower to shower hose by rotating hand shower in a clockwise direction.
5. Place connected hand shower into hand shower mount and adjust hand shower angle to desired position.



Registration:

Please visit us at www.evolve showerheads.com to register your **evolve** showerhead and for all your product support, questions & needs. Registration is quick, simple and allows us to help you in a more timely manner should you have any questions.

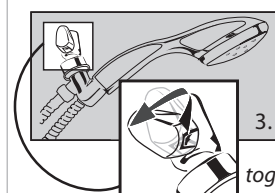


Using your **evolve** showerhead

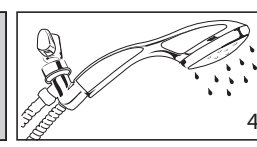
1. **Turn on shower as usual.** Brush your teeth, grab a cup of coffee, make your bed, hug your kids because you no longer have to monitor your shower's water temperature - **evolve's** ShowerStart technology does it for you.
2. Your **evolve** showerhead is equipped with ShowerStart technology. ShowerStart allows your showerhead to automatically enter trickle mode when the water's flow is warm enough for a shower. ShowerStart prevents hot water from unnecessarily going down the drain when no one's in the shower.
3. Reach in the shower and give **evolve's** pull cord a tug. Or give the "toggle switch" a slight twist forward or backward to resume the water's normal flow.

The Toggle Switch has two uses:

 1. resumes water flow after it has been automatically paused by your **evolve** showerhead
 2. starts water flow any time you turn on shower and water doesn't flow from your **evolve** showerhead
4. Once the water's flow resumes, check it to make sure the **temperature is right** for taking a shower, step in and shower as usual. **Always resume water flow before entering shower.**

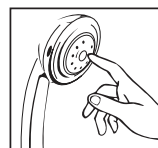


toggle



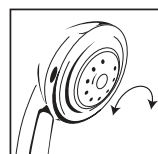
IMPORTANT SAFETY INFORMATION:

- evolve is NOT** an anti-scald device.
- Lower water heater temperature to prevent scalding accidents. Water temperatures above 120° F can cause severe burns or even death.
 - Always resume water flow and check water temperature before entering shower
 - Not designed for use with tankless hot water heaters



Cleaning anti-clog spray nozzles:

Your **evolve** showerhead has easy to clean anti-clog spray nozzles. To remove mineral deposits simply glide your finger along the nozzle tips while the showerhead is running.



Changing your spray patterns:

If your **evolve** showerhead comes with multiple spray patterns you can switch from one pattern to another by turning the showerhead's outer ring. Simply rotate the ring to the left or right to select the spray pattern you prefer.

Inside